

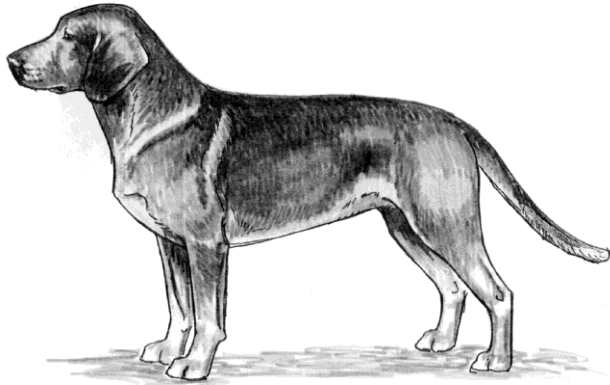
ALPINE DRACHSBRACKE

Official UKC Breed Standard

Revised July 1, 2009

Scenthound Group

©Copyright 1996, United Kennel Club



The goals and purposes of this breed standard include: to furnish guidelines for breeders who wish to maintain the quality of their breed and to improve it; to advance this breed to a state of similarity throughout the world; and to act as a guide for judges.

Breeders and judges have the responsibility to avoid any conditions or exaggerations that are detrimental to the health, welfare, essence and soundness of this breed, and must take the responsibility to see that these are not perpetuated.

Any departure from the following should be considered a fault, and the seriousness with which the fault should be regarded should be in exact proportion to its degree and its effect upon the health and welfare of the dog and on the dog's ability to perform its traditional work.

HISTORY

In the late 19th Century, the gamekeepers for Crown Prince Rudolf were using a hunting/shooting dog that bore a strong resemblance to the modern Alpine Drachsbracke. The breed was used as a tracking dog for wounded deer and a scenthound for hare and fox. In 1932 the breed was recognized in Austria, and in 1991 it was accepted as a Scenthound by FCI.

The Alpine Drachsbracke was recognized by the United Kennel Club January 1, 1996.

GENERAL APPEARANCE

The Alpine Drachsbracke is a rectangular shaped, short legged, sturdy hunting dog with robust, strong boned body structure, a dense coat and firm muscles.

CHARACTERISTICS

The breed has a fearless personality.

HEAD

SKULL - The skull is slightly arched. There is a well pronounced furrow between the eyes. The occiput is barely prominent. The stop is distinct.

MUZZLE - The muzzle is strong and slightly shorter than the skull. The lips are close fitting, moderately rounded and have black pigment.

TEETH - The Alpine Drachsbracke has a complete set of evenly spaced, white teeth meeting in a scissors or level bite. The absence of the first or second premolars is tolerated.

NOSE - Black.

EYES - Dark brown in color, with close fitting, black rims.

EARS - Set on high, without folds, hanging close to the cheeks, well rounded at the tips, the ears should reach nearly to the end of the muzzle.

NECK

Muscular, and not too long.

FOREQUARTERS

The shoulder blades are close-fitting, long, sloping, and strongly muscled.

FORELEGS - The front legs are straight and strong. They appear short in relation to the length of the body.

BODY

The trunk is strong and well muscled, and elongated, in a ratio of length to height of 3:2. The chest is deep and broad, and there is a pronounced forechest. The depth of chest should be about one half the height at the withers. The back is straight, and the loin is short and broad. The croup is barely sloping. The belly is moderately tucked up.

HINDQUARTERS

The hindquarters are muscular, strong, and well-angulated.

HIND LEGS - Seen from the rear, the hind legs are straight.

FEET

Round, with tight toes, strong pads and black nails.

TAIL

Set on high, strong at the root, reaching barely to the ground in length, and carried somewhat low. There is a brush of hair on the underside of the tail.

COAT

A thick, dense close fitting, double coat.

COLOR

The preferred color is dark deer red, with or without interspersed black hairs. Also acceptable is black with clearly defined rust red markings on the head, chest, legs, feet and underside of tail. A white star on the chest is permitted.

HEIGHT AND WEIGHT

Ideal height for males is 15 inches. For females it is 14 inches.

GAIT

Movement is ground covering.

ELIMINATING FAULTS

(An Eliminating Fault is a Fault serious enough that it eliminates the dog from obtaining any awards in a conformation event.)

Height less than 13 inches or greater than 16.5 inches.

DISQUALIFICATIONS

(A dog with a Disqualification must not be considered for placement in a conformation event, and must be reported to UKC.)

Unilateral or bilateral cryptorchid.

Viciousness or extreme shyness.

Albinism.